

NOMBRE

**TOLVA AVES PLÁSTICO RECICLADO 12 KGS.**

REFERENCIA

**11234**

**CARACTERÍSTICAS DE PRODUCTO**

MATERIAL

POLIPROPILENO RECICLADO

COLOR

MEZCLA ALEATORIA

PESO

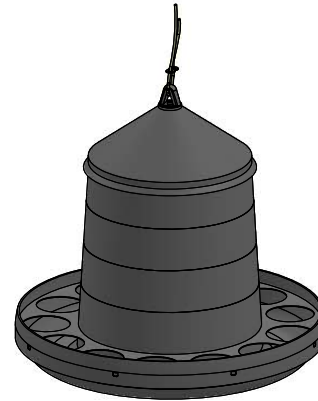
1,150 kg

TIPO DE CIERRE

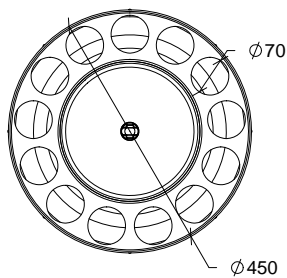
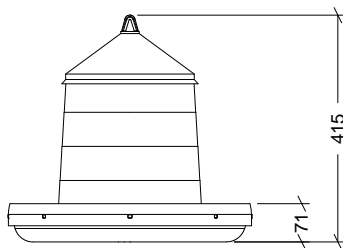
PRESIÓN

ACCESORIOS

CUERDA Y FRENO

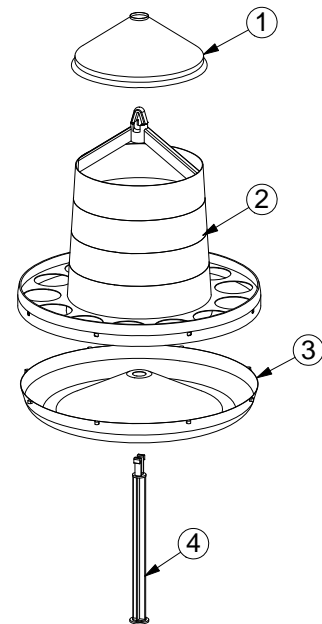


CROQUIS



DESPIECE

Nº	DESCRIPCIÓN
1	TAPADERA
2	CONO
3	PLATO
4	EJE



**CARACTERÍSTICAS DE EMBALAJE**

TIPO DE PACKING

CAJA

CANTIDAD

5 Unidades

DIMENSIONES

455x455x670 mm

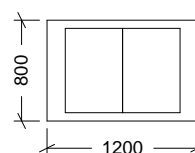
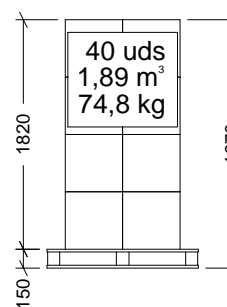
PESO

7,850 kg

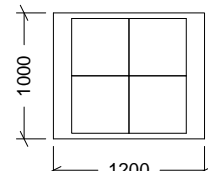
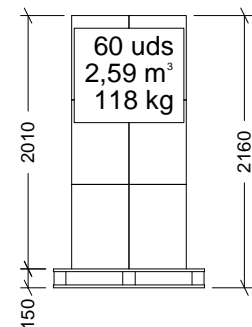
VOLUMEN

0,139 m<sup>3</sup>

PALET EUROPEO



PALET AMERICANO



**PESO PALET EUROPEO: 12 kg**

**PESO PALET AMERICANO: 24 kg**